



# Reducing Your Input Costs

2025

---



Western Seeds, Clover Park  
Farm, Narberth, SA67 8EY



[info@westernseeds.com](mailto:info@westernseeds.com)



+44 (0)1834 861 904

# Contents

|   |       |
|---|-------|
| Sustainable Farming Incentive English Agri Grants | 4-7   |
| Growing for the Environment Welsh Agri Grants     | 8-9   |
| Selecting the Best Grass Mixture for Your Farm    | 10-11 |
| Agricultural Herbage Mixtures                     | 12-29 |
| Herbs & Clover                                    | 30-31 |
| Why Farmers Choose WS Arable Silage               | 32    |
| WS Arable Silage Mixtures                         | 33    |
| Forage Cover Crops                                | 34-41 |
| WS Spring Cereal Blends                           | 42-45 |
| Combicrops®: Growing Your Own Concentrate         | 46-47 |
| Using Combicrops®                                 | 48-49 |
| Combicrop® Mixtures                               | 50-55 |
| Winter Bird Food Mixtures                         | 56-57 |
| Amenity Grass Seed                                | 58    |
| Ordering & Payment Information                    | 59    |





# Welcome

Welcome to our 2025 catalogue, in this our 49th year of supplying our customers with the very latest seed mixtures containing the best possible varieties for their farms.

Farming on our small U.K. island comes with its own unique challenges, especially with a climate that can be unpredictable and demanding. The 2024 growing season was a perfect example, with a cold, wet spring delaying crop sowing. However, it's encouraging to see that, even in challenging conditions, our diverse range of cereal blends, combicrops® and reseeded arable silage mixtures have once again proven their resilience, delivering reliable results.

Every year we review and enhance our grass seed mixtures with the latest NIAB-recommended varieties, ensuring you're getting top-quality seed for your farm. Check them out in the independent NIAB Recommended Grass and Clover Lists for 2025, freely available for your reference. It's a great resource to confirm you're planting the best possible varieties for your farm.

While aligning your crops with the latest Agri-Grant Schemes can offer financial benefits, it's important to prioritise what's right for your farm. We provide a full range of mixtures for these schemes and our team of crop management specialists is always on hand to assist you in selecting the most suitable mixtures and providing guidance on best practices for growing and management.

**“We're here to support your business every step of the way.”**

John Faulconbridge | Managing Director



# Sustainable Farming Incentive (SFI) English Agri-Grant Scheme



The Sustainable Farming Incentive (SFI) scheme pays farmers to adopt and maintain sustainable farming practices that can protect the natural environment alongside food production.



Look out for this symbol in the catalogue. We can supply certified seed suitable for all SFI schemes.

| CSAM3: Herbal Leys   | Grant (£/ha) | Use                        | Page  |
|--|--------------|----------------------------|-------|
| For full re-seed   | £382.00      | HARMONY DP                 | 12    |
|  |              | SYMPHONY DP                | 13    |
|  |              | BANNER                     | 20    |
|  |              | "PLUS" grass mixtures      | 15-27 |
| For over-sowing use  | £382.00      | SALVUS PLUS                | 22    |
|  |              | HARMONY DP (at half-rate)  | 12    |
|  |              | SYMPHONY DP (at half-rate) | 13    |
| For adding additional herbs/<br>legumes to an existing sward | £382.00      | FORTIFY                    | 31    |

| CSAM2                           | Grant (£/ha) | Use          | Page    |
|---------------------------------|--------------|--------------|---------|
| Multi-Species Winter Cover Crop | £129.00      | PREMIUM PLUS | call us |
|                                 |              | ZIPPY PLUS   | 37      |
|                                 |              | HUMBOLT PLUS | 39      |



Disclaimer: Before ordering seed for SFI schemes please see page 59.





| SOH2 / SOH3: Multi-Species Spring / Summer-Sown Cover Crop |                     | Grant (£/ha) |
|--|---------------------|--------------|
| SHIELD contains  | 40% Hybrid Ryegrass | £163.00      |
|  | 30% Buckwheat       |              |
|  | 20% Red Clover      |              |
|  | 10% Berseem Clover  |              |
| <b>Available in 25 kilo (1 Hectare) bags</b>               |                     |              |

| SOH4: Winter Cover Following Maize Crop | Grant (£/ha) | Use                     | Page  |
|---|--------------|-------------------------|-------|
| For undersowing use                     | £203.00      | PREMIUM                 | 26    |
| For sowing post-harvest                 | £203.00      | PROTECT                 | 25    |
|   |              | HUMBOLT or HUMBOLT PLUS | 38-39 |



Disclaimer: Before ordering seed for SFI schemes please see page 59.

| <b>CAHL1: Pollen and Nectar Flower Mix</b>   | <b>Grant (£/ha)</b> |
|--|---------------------|
| <b>PROGRESS contains</b>                     | <b>£739.00</b>      |
| 45.0% Vetch                                  |                     |
| 25.0% Buckwheat                              |                     |
| 20.0% Red Clover                             |                     |
| 2.5% Alsike clover                           |                     |
| 6.25% Phacelia                               |                     |
| 0.63% Common Knapweed                        |                     |
| 0.62% Yarrow                                 |                     |
| <b>Available in 20 kilo (1 Hectare) bags</b> |                     |

| <b>CAHL2</b>                                      | <b>Grant (£/ha)</b> | <b>Use</b>                   | <b>Page</b> |
|---|---------------------|------------------------------|-------------|
| Winter Bird Food on Arable and Horticultural Land | £853.00             | WINTER BIRD annual or 2-year | 56          |
|   |                     | GALLANT                      | 57          |

| <b>CNUM2</b>                  | <b>Grant (£/ha)</b> | <b>Use</b>                          | <b>Page</b> |
|-------------------------------|---------------------|-------------------------------------|-------------|
| Legumes on Improved Grassland | £102.00             | SELECT                              | 31          |
|                               |                     | Any of our long-term grass mixtures | 12-22       |

| <b>CNUM3: Legume Fallow</b>                  |                           | <b>Grant (£/ha)</b> |
|--|---------------------------|---------------------|
| <b>ATTAIN contains</b>                       | <b>METTLE contains</b>    | <b>£593.00</b>      |
| 57.50% Vetch                                 | 37.50% Perennial Ryegrass |                     |
| 12.50% Red Clover                            | 32.50% Vetch              |                     |
| 12.50% White Clover                          | 10.00% Red clover         |                     |
| 6.25% Alsike Clover                          | 2.50% Alsike Clover       |                     |
| 6.25% Crimson Clover                         | 10.00% White Clover       |                     |
| 5.00% Birds foot Trefoil                     | 3.75% Birds Foot Trefoil  |                     |
|  | 3.75% Crimson Clover      |                     |
| <b>Available in 20 kilo (1 Hectare) bags</b> |                           |                     |



Disclaimer: Before ordering seed for SFI schemes please see page 59.






| CIPM3   | Grant (£/ha) | Use            | Page    |
|---|--------------|----------------|---------|
| Companion Crop on Arable and Horticultural Land | £55.00       | PREMIUM        | 26      |
|   |              | PREMIUM PLUS   | call us |
|   |              | Any Combicrop® | 51-55   |

**We can also supply seed mixtures for:**

| IPM2  | Grant (£/ha) |
|---|--------------|
| Flower-rich grass margins, blocks, or in-field strips | £798.00      |

| AHW1           | Grant (£/ha) |
|----------------|--------------|
| Bumblebird Mix | £747.00      |

 Disclaimer: Before ordering seed for SFI schemes please see page 59.





# Growing For The Environment Welsh Agri-Grant Scheme



The Growing for the Environment (GfE) scheme supports farmers to produce food in a sustainable way, whilst taking action to respond to the climate emergency and to help reverse the decline in biodiversity.



Look out for this symbol in the catalogue. We can supply certified seed suitable for all GfE schemes.

| Option   | Grant (£/ha) | Use   | Page        |
|--|--------------|---|-------------|
| 1 Mixed Leys   | £324.00      | HARMONY GfE   | 14          |
| 2 Red Clover or Lucerne Ley                              | £263.00      | TARGET or PRONTO                                    | 24          |
| 3 Protein Crops (No Weed Control)                        | £270.00      | Beans or Peas                                       | call us     |
| 4 Unsprayed Root or Forage Crop with Ungrazed Margins    | £151.00      | RAPID, SPRINT or TEMPO                              | 35          |
| 5 Unsprayed Spring Sown Cereals                          | £219.00      | Western Seeds Spring Cereal Blends                  | 43-45       |
| 6 Unsprayed Spring Sown Cereals Undersown with Mixed Ley | £349.00      | Western Seeds Spring Cereal Blends with HARMONY GfE | 43-45<br>14 |
| 7 Unsprayed Cereal and Protein Crop Mix                  | £225.00      | GfE Combicrop®<br>FORWARD or BOOSTER                | 50<br>55    |



Disclaimer: Before ordering seed for GfE schemes, please see page 59





| Option | Grant (£/ha) | Use  | Page           |
|--------|--------------|--|----------------|
| 8      | £349.00      | GfE Combicrop®<br>FORWARD or BOOSTER with<br>HARMONY GfE | 50<br>55<br>14 |
| 9      | £109.00      | PREMIUM  | 26             |
| 10     | £919.00      | Winter Bird Annual Mixture<br>GALLANT                    | 56<br>57       |
| 11     | £1,799.00    | Winter Bird 2-Year Mixture                               | 56             |



Disclaimer: Before ordering seed for GfE schemes, please see page 59





## Selecting the best grass Seed mixture for your Farm

As you browse through various seed catalogues offering herbage leys in the U.K., it's easy to get confused by the sheer number of grass mixtures available. Particularly since many of them contain varieties on the NIAB Grass and Clover Recommended Lists.

Through careful study of the varieties on the NIAB lists and knowledge from our own extensive experience in the field, we have identified the grass varieties that really stand out as the best for farm use today.

Using these varieties can make a significant difference to the performance of the ley.

**For example, let us compare our BONUS long-term dual-purpose ley with an long-term cutting and grazing ley from another company.**

### **BONUS contains**

- AberSevern
- AberZeus
- AberGain
- AberLee
- AberBann
- Comer
- AberHerald
- AberSwan

### **Competitor mixture contains**

- AberAvon
- AberLee
- AberGreen
- Bijou
- Winnetou
- Nifty
- Fintona
- Unnamed Clover Blend

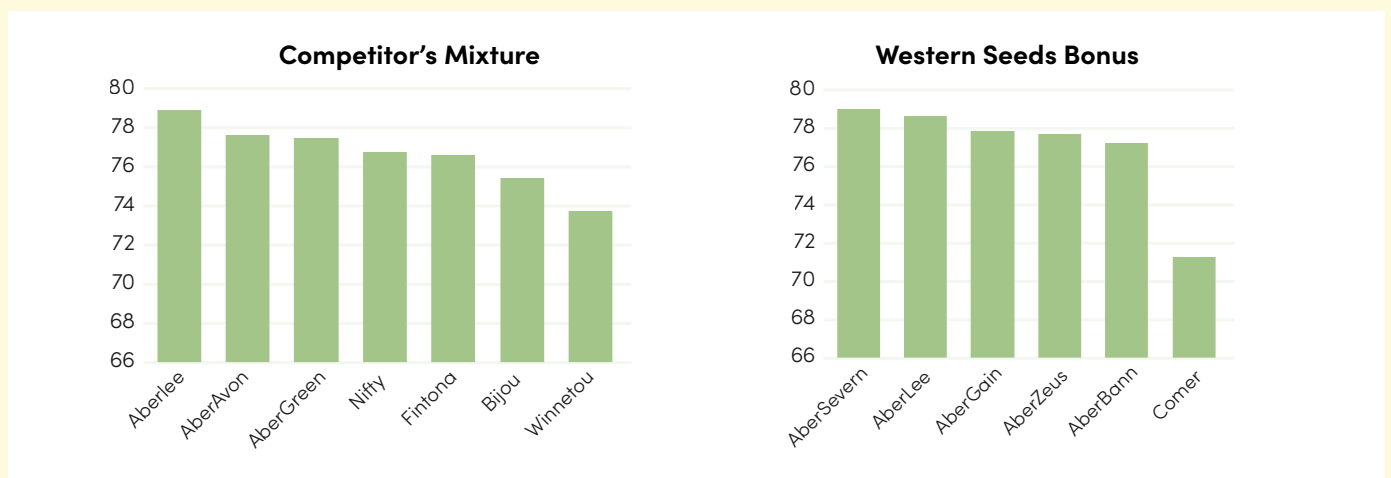
On first glance, they look similar – both containing ABER varieties that are on the NIAB recommended list.

But if you look at the actual performance of the varieties used, a large difference between these mixtures quickly emerges.





BONUS uses market leading high D-value varieties compared with its competitors.



Based on data from the 2024/25 NIAB

D-value is a measure of quality and refers to the percentage of the dry matter that can be digested by an animal.

One percentage point of D-value equates to 1.6 MJ/kg DM of ME

M.E (metabolizable energy) is the amount of energy a ruminant animal can draw from the feed. It is measured in megajoules of energy per kilogram of forage dry matter (MJ/ kg DM).

### What Does This Mean On Farm?

ME is a key driver of animal performance in grass-based systems. As the ME value increases animal intakes rise, giving increased production.

- » An increase of 1.0 D-value = 2.6 litres of milk per dairy cow per day
- » An increase of 1.0 D-value = 400g/day extra beef liveweight gain per day
- » An increase of 1.0 D-value = 200g/day of extra lamb liveweight gain per day

(U.K. NIAB FIGURES)

### And it's not just BONUS that performs better!

Each mixture we produce is carefully crafted from the very best varieties of high D-value grasses available. So whatever mixture you select from this catalogue you can be sure that you are buying a quality mixture that will help improve productivity and profitability on your farm.



# HARMONY DP

## Superior Dual-Purpose Herbal Ley

Our herbal ley, HARMONY DP, has received excellent feedback from farmers who are delighted with the quality of the herbal ley it produces.

HARMONY DP is a true herbal ley, consisting of a balanced blend of five grasses, three legumes, and five herbs.

The species used in HARMONY DP have been carefully selected to provide long-lasting, high-quality forage to feed your stock and meet the requirements for SFI CSAM3.

HARMONY DP can be used for both grazing and cutting, offering flexibility to suit your operation.

Designed to last over five years, HARMONY DP produces a diverse and resilient pasture that contributes to soil health, biodiversity, and overall farm sustainability.

### Why Choose HARMONY DP?

- » **Creates a Quality, Diverse Herbal Ley:** Contains 5 grasses, 3 legumes and 5 herbs.
- » **Flexible Usage:** Varieties used make it suitable for both grazing and cutting.
- » **Long-Lasting:** Designed to last over five years, ensuring long-term productivity.
- » **Ecologically Friendly:** Enhances soil health and supports biodiversity on your farm.
- » **Qualifies for SFI CSAM3:** Worth £382.00 per Hectare.

| Harmony DP contains                            | Kilos               |
|--|---------------------|
| ABERGAIN Tetraploid Late Perennial Ryegrass    | 2.50                |
| COMER Timothy                                  | 2.50                |
| LAURA Meadow Fescue                            | 2.50                |
| DONATA Cocksfoot                               | 1.00                |
| GARANT Red Clover                              | 0.60                |
| EVORA Smooth stalked meadow grass              | 0.80                |
| ABERSWAN White Clover                          | 2.00                |
| AURORA Alsike Clover                           | 0.40                |
| PUNA II Chicory                                | 0.13                |
| ENDURE Chicory                                 | 0.12                |
| AGRI TONIC Plantain                            | 0.25                |
| SHEEPS PARSLEY Herb                            | 0.10                |
| BURNET Herb                                    | 0.05                |
| YARROW Herb                                    | 0.05                |
| <b>Available in 0.5 Hectare (13 kilo) bags</b> | <b>Total: 13.00</b> |



**Disclaimer:** Before ordering seed for SFI schemes please see page 59.



# SYMPHONY DP

## Dual-Purpose Herbal Ley

SYMPHONY DP is a quality herbal ley which has as its base a blend of ABER perennial ryegrasses which will produce a solid, thick sward suitable for more intensive dairy and beef farms in the U.K.

SYMPHONY is a long-term ley which can be cut or grazed over many years and meets the requirements for SFI CSAM3.

### Why Choose SYMPHONY DP?

- » **Based on ABER Perennial Ryegrasses:** creates a solid, thick sward suitable for intensive dairy/beef herds.
- » **Flexible Usage:** Varieties used make it suitable for both grazing and cutting.
- » **Long-Lasting:** Designed to last over five years, ensuring long-term productivity.
- » **Ecologically Friendly:** Enhances soil health and supports biodiversity on your farm.
- » **Qualifies for SFI CSAM3:** Worth £382.00 per Hectare.

| Symphony DP contains                             | Kilos               |
|--|---------------------|
| ABERZEUS Diploid Intermediate Perennial Ryegrass | 3.50                |
| ABERGAIN Tetraploid Late Perennial Ryegrass      | 2.50                |
| ABERLEE Diploid Late Perennial Ryegrass          | 2.50                |
| ABERBANN Diploid Late Perennial Ryegrass         | 2.00                |
| COMER Timothy                                    | 0.50                |
| EVORA Smooth stalked meadow grass                | 0.30                |
| ABERCLARET Red Clover                            | 0.60                |
| ABERSWAN White Clover                            | 2.00                |
| AURORA Alsike Clover                             | 0.40                |
| PUNA II Chicory                                  | 0.13                |
| ENDURE Chicory                                   | 0.12                |
| AGRI TONIC Herb                                  | 0.25                |
| SHEEPS PARSLEY Herb                              | 0.10                |
| BURNET Herb                                      | 0.05                |
| YARROW Herb                                      | 0.05                |
| <b>Available in 0.5 Hectare (15 kilo) bags</b>   | <b>Total: 15.00</b> |



**Disclaimer:** Before ordering seed for SFI schemes please see page 59.





# HARMONY GfE

## Dual-Purpose Mixed Ley

HARMONY GfE is a quality mixed ley that meets the criteria of the Welsh Agri-Grant Scheme Option 1: Mixed Leys.

It will produce a diverse sward of deep rooting grasses, legumes and herbs that, with good management, will last more than the 3 year minimum required by the scheme.

### Why Choose HARMONY GfE?

- » **Creates a Quality, Diverse Herbal Ley:** Contains 5 grasses, 3 legumes and 3 herbs.
- » **Flexible Usage:** Varieties used make it suitable for both grazing and cutting.
- » **Long-Lasting:** Designed to last over three years, ensuring long term productivity.
- » **Ecologically Friendly:** Enhances soil health and supports biodiversity on your farm.
- » **Qualifies for GfE Option 1:** Worth £324.00 per hectare.

### Harmony GfE contains

|   | Kilos |
|---|-------|
| ABERGAIN Tetraploid Late Perennial Ryegrass | 3.00  |
| LAURA Meadow Fescue                         | 2.00  |
| COMER Timothy                               | 1.50  |
| LUCULLUS Cocksfoot                          | 0.50  |
| EVORA Smooth stalked meadow grass           | 0.50  |
| ABERSWAN White Clover                       | 2.00  |
| ABERCLARET Red Clover                       | 2.00  |
| AURORA Alsike Clover                        | 0.55  |
| AGRI TONIC Plantain                         | 0.20  |
| PUNA II Chicory                             | 0.10  |
| ENDURE Chicory                              | 0.10  |
| SHEEPS PARSLEY Herb                         | 0.05  |

Available in 0.5 Hectare (12.5 kilo) bags

**Total:** 12.50



**Disclaimer:** Before ordering seed for GfE schemes please see page 59



# MELIOR

## White Clover Silage Ley

MELIOR is a superior herbage mixture exclusive to Western Seeds.

MELIOR has been specifically formulated to be ready for harvest at the same time as our MAGNUM. (See page 16)

MELIOR will help to control red clover eelworm when used in rotation with MAGNUM.

### Why Choose MELIOR?

- » **High-Yielding Ley:** At least four cuts of top-quality silage annually, over five years with good crop management.
- » **Top-Quality Silage:** Produces a high protein/high D-value forage
- » **Dense Sward:** Creates a thick, dense cover that helps suppress weed growth.
- » **Soil Enrichment:** The clovers add residual nitrogen to the soil
- » **Soil Improvement:** Improves soil structure with valuable humus.

| MELIOR contains                                     | Kilos               |
|---|---------------------|
| ABERZEUS Diploid Intermediate Perennial Ryegrass    | 4.00                |
| ABERSPEY Tetraploid Intermediate Perennial Ryegrass | 2.50                |
| ABERGREEN Diploid Intermediate Perennial Ryegrass   | 2.00                |
| ABERGAIN Tetraploid Late Perennial Ryegrass         | 3.00                |
| ABERSWAN White Clover                               | 1.50                |
| <b>Available in 1 Acre (13 kilo) bags</b>           | <b>Total: 13.00</b> |

# MELIOR PLUS

## White Clover Silage Ley

If you are going to apply for SFI CSAM3, then use MELIOR PLUS

| MELIOR PLUS contains                                | Kilos               |
|---|---------------------|
| ABERZEUS Diploid Intermediate Perennial Ryegrass    | 4.00                |
| ABERSPEY Tetraploid Intermediate Perennial Ryegrass | 2.50                |
| ABERGREEN Diploid Intermediate Perennial Ryegrass   | 2.00                |
| ABERGAIN Tetraploid Late Perennial Ryegrass         | 3.00                |
| ABERSWAN White Clover                               | 1.50                |
| AURORA Alsike Clover                                | 0.10                |
| PUNA II Chicory                                     | 0.10                |
| ENDURE Chicory                                      | 0.10                |
| AGRI TONIC Plantain                                 | 0.20                |
| <b>Available in 1 Acre (13.5 kilo) bags</b>         | <b>Total: 13.50</b> |



**Disclaimer:** Before ordering seed for SFI schemes please see page 59.



# MAGNUM

## Red and White Clover Silage Ley

Unique to Western Seeds

MAGNUM has been grown in the U.K. for over 25 years.

### Why Choose MAGNUM?

- » **High-Yielding Ley:** At least four cuts of top-quality silage annually, over five years with good crop management.
- » **Top-Quality Silage:** Produces a high protein/high D-value forage
- » **Dense Sward:** Creates a thick, dense cover that helps suppress weed growth.
- » **Soil Enrichment:** The clovers add residual nitrogen to the soil
- » **Soil Improvement:** Improves soil structure with valuable humus.

| MAGNUM contains                                     | Kilos               |
|---|---------------------|
| ABERZEUS Diploid Intermediate Perennial Ryegrass    | 4.00                |
| ABERSPEY Tetraploid Intermediate Perennial Ryegrass | 2.50                |
| ABERGAIN Tetraploid Late Perennial Ryegrass         | 3.00                |
| ABERCLARET Red Clover                               | 3.00                |
| ABERSWAN White Clover                               | 1.00                |
| <b>Available in 1 Acre (13.5 kilo) bags.</b>        | <b>Total: 13.50</b> |



### Controlling Eelworm

Alternate sowing of MAGNUM with MELIOR works well to minimise red clover eelworm build-up in the soil.



# Why Stock Farmers Rely on Magnum

Dairy and beef farmers across the U.K. have been successfully growing MAGNUM red and white clover silage ley for many years. By consistently incorporating the newest and most persistent red and white clover varieties from plant breeders, along with a selection of the best long-lasting high sugar perennial ryegrasses, MAGNUM ensures high-quality and abundant conserved herbage.

MAGNUM is ideally used in the conservation sections of your farm rotations, as heavy or winter grazing can reduce the persistency of red clover in the ley. It is ideally suited to multi-cut silage systems.

The use of very persistent intermediate and late heading high sugar grasses used in MAGNUM helps drive fermentation of the forage in the silage pit.



**MAGNUM provides 4 to 5 cuts of high-quality, high-protein forage, plus 150 units per acre (200 kilos per hectare) of available nitrogen per growing year.**

## How to Maximise the Benefits of MAGNUM

### Establishment

- » Spring sowing is the best method to establish MAGNUM.
- » Broadcast sowing (surface sowing with air machines) is preferred over drilling.
- » For optimal results, sow MAGNUM under one of our specialist Arable Silage mixtures. Harvest the grass and arable silage mixture in nine to ten weeks to achieve a first-class reseed (see page 33).

### Crop Management for the Next 5+ Years

- » Silage production only.
- » Four to five cuts per year.
  - » Take the first cut in spring at the big bud stage.
  - » Cut no lower than 8cm.
- » Apply available phosphate and potash (well-decomposed manure/slurry) to maintain soil fertility indices, to ensure MAGNUM's viability over the ley's duration.
- » Winter management is important. Avoid heavy winter grazing. If winter growth is excessive, a light grazing/topping is recommended.





# BONUS

## Long-Term Dual-Purpose Ley

The versatility of BONUS makes it one of our most popular mixtures. Perfect for both grazing and conservation, this exceptional blend features a high proportion of diploid perennial ryegrasses, ensuring top-quality performance and persistency.

### Why Choose BONUS?

- » **Dense, Thick Sward:** Suppresses weed growth.
- » **Excellent Palatability:** Increased animal intake.
- » **Exceptional Persistency:** Reliable and long-lasting growth.
- » **High D-Value Forage:** Superior nutritional value for your stock.
- » **Dual-Purpose Use:** Ideal for both grazing and conservation.

| BONUS contains                                   | Kilos               |
|--|---------------------|
| ABERZEUS Diploid Intermediate Perennial Ryegrass | 3.00                |
| ABERGAIN Tetraploid Late Perennial Ryegrass      | 2.00                |
| ABERSEVERN Diploid Late Perennial Ryegrass       | 1.50                |
| ABERLEE Diploid Late Perennial Ryegrass          | 2.00                |
| ABERBANN Diploid Late Perennial Ryegrass         | 3.00                |
| COMER Timothy                                    | 0.50                |
| ABERHERALD White Clover                          | 0.50                |
| ABERSWAN White Clover                            | 0.50                |
| <b>Available in 1 Acre (13 kilo) bags</b>        | <b>Total: 13.00</b> |

# BONUS PLUS

## Long-Term Dual-Purpose Herbal Ley

If you are going to apply for SFI CSAM3, then use BONUS PLUS.

| BONUS PLUS Contains                              | Kilos               |
|--|---------------------|
| ABERZEUS Diploid Intermediate Perennial Ryegrass | 3.00                |
| ABERGAIN Tetraploid Late Perennial Ryegrass      | 2.00                |
| ABERSEVERN Diploid Late Perennial Ryegrass       | 1.50                |
| ABERLEE Diploid Late Perennial Ryegrass          | 2.00                |
| ABERBANN Diploid Late Perennial Ryegrass         | 3.00                |
| COMER Timothy                                    | 0.50                |
| ABERHERALD White Clover                          | 0.50                |
| ABERSWAN White Clover                            | 0.50                |
| AURORA Alsike Clover                             | 0.10                |
| PUNA II Chicory                                  | 0.10                |
| ENDURE Chicory                                   | 0.10                |
| AGRI TONIC Plantain                              | 0.20                |
| <b>Available in 1 Acre (13.50 kilo) bags</b>     | <b>Total: 13.50</b> |



**Disclaimer:** Before ordering seed for SFI schemes please see page 59.



# FORTIS

## Long-Term Grazing Ley

Looking for a long-lasting, thick-leaved, dense-growing grazing sward? Look no further than FORTIS.

Trusted and valued by stock farmers across the U.K. for many years.

The grasses in FORTIS are carefully selected for their increased persistency and excellent grazing palatability, which means target residual is easier to achieve.

### Why Choose FORTIS?

- » **Dense, Thick Sward:** Feeds your stock whilst suppressing weeds.
- » **Excellent Palatability:** Increased livestock intake.
- » **Exceptional Persistency:** Reliable and long-lasting ley.
- » **High D-Value Forage:** Superior nutritional value for your stock.
- » **Simpler Grazing Management:** Target residuals easier to achieve

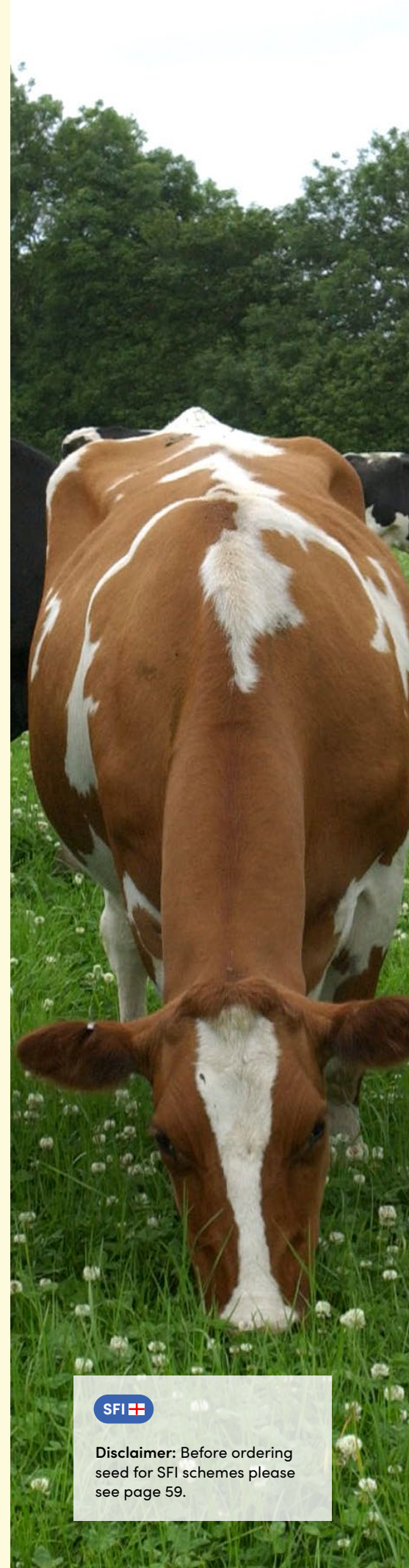
| FORTIS Contains                                  | Kilos               |
|--|---------------------|
| ABERZEUS Diploid Intermediate Perennial Ryegrass | 3.50                |
| ABERSEVERN Diploid Late Perennial Ryegrass       | 3.00                |
| ABERTEST Diploid Late Perennial Ryegrass         | 2.00                |
| ABERLEE Diploid Late Perennial Ryegrass          | 3.50                |
| ABERHERALD White Clover                          | 0.50                |
| ABERSWAN White Clover                            | 0.50                |
| <b>Available in 1 Acre (13 kilo) bags</b>        | <b>Total: 13.00</b> |

# FORTIS PLUS

## Long-Term Herbal Grazing Ley

If you are going to apply for SFI CSAM3, then use FORTIS PLUS.

| FORTIS PLUS Contains:                            | Kilos               |
|--|---------------------|
| ABERZEUS Diploid Intermediate Perennial Ryegrass | 3.50                |
| ABERSEVERN Diploid Late Perennial Ryegrass       | 3.00                |
| ABERTEST Diploid Late Perennial Ryegrass         | 2.00                |
| ABERLEE Diploid Late Perennial Ryegrass          | 3.50                |
| ABERHERALD White Clover                          | 0.50                |
| ABERSWAN White Clover                            | 0.50                |
| AURORA Alsike Clover                             | 0.10                |
| PUNA II Chicory                                  | 0.10                |
| ENDURE Chicory                                   | 0.10                |
| AGRI TONIC Plantain                              | 0.20                |
| <b>Available in 1 Acre (13.50 kilo) bags</b>     | <b>Total: 13.50</b> |



**Disclaimer:** Before ordering seed for SFI schemes please see page 59.



# BANNER

## Dual-Purpose Herbal Ley for Dryer Conditions

BANNER is a 5+ year dual-purpose herbal ley designed to enhance both yield and quality in regions prone to summer drought.

This specially formulated mixture includes herbs that boost summer productivity and palatability.

BANNER is suitable for environmental scheme SFI CSAM3.

### Why Choose BANNER?

- » **Early High-Quality Spring Growth:** Ideal for early grazing.
- » **Substantial Silage and Grazing Yields:** Maximises production before drought affects growth.
- » **Thick, Persistent Sward:** Helps control forage and arable weeds.
- » **Highly Palatable Forage:** Increased animal intake.
- » **Robust Root System:** Enhances soil structure and resilience.
- » **Qualifies for SFI SAM3:** Worth £154.59 per acre.

### BANNER Contains

|  | Kilos               |
|--|---------------------|
| ABERECHO Hybrid Tetraploid Ryegrass                  | 1.80                |
| ABERCLYDE Tetraploid Intermediate Perennial Ryegrass | 2.00                |
| ABERROOT Festulolium                                 | 1.00                |
| ABERGAIN Tetraploid Late Perennial Ryegrass          | 2.00                |
| ABERSPEY Tetraploid Intermediate Perennial Ryegrass  | 2.00                |
| ABERAVON Diploid Late Perennial Ryegrass             | 3.00                |
| ABERHERALD White Clover                              | 0.50                |
| ABERSWAN White Clover                                | 0.40                |
| AURORA Alsike Clover                                 | 0.10                |
| PUNA II Chicory                                      | 0.03                |
| ENDURE Chicory                                       | 0.03                |
| AGRI TONIC Plantain                                  | 0.11                |
| BURNET Herb  | 0.02                |
| YARROW Herb  | 0.01                |
| <b>Available in 1 Acre (13 kilo) bags</b>            | <b>Total: 13.00</b> |



### Improving Field Productivity

For spring reseeding we recommend that you use one of our Arable Silage mixtures. They are designed specifically to be undersown with spring grass and will give you a good crop of silage without compromising the quality of your new ley. See page 33.



**Disclaimer:** Before ordering seed for SFI schemes please see page 59.



# PRIMUS

## Long-Term Ley for Wet Conditions

Struggling with a wet, poorly drained field that's tough to manage? You're not alone! Perennial ryegrasses often fail to persist in these conditions, leading to a return of natural grasses that lower field productivity.

The answer is PRIMUS. This specialised mixture of timothy, meadow fescue, and white clover has a proven track record of thriving in wet conditions.

### Why Choose PRIMUS?

- » **Persistent Growth:** Thrives in challenging, wet fields.
- » **High-Quality Grazing:** Provides abundant, nutritious forage in summer.
- » **Versatile Production:** Suitable for hay and silage cuts.

| PRIMUS Contains                           | Kilos               |
|---|---------------------|
| COMER Timothy                             | 2.50                |
| LAURA Meadow Fescue                       | 5.00                |
| ABERROOT Festulolium                      | 1.50                |
| ABERHERALD White Clover                   | 0.50                |
| ABERSWAN White Clover                     | 0.50                |
| <b>Available in 1 Acre (10 kilo) bags</b> | <b>Total: 10.00</b> |

# PRIMUS PLUS

## Long-Term Herbal Ley for Wet Conditions

If you are going to apply for SFI CSAM3, then use PRIMUS PLUS.

| PRIMUS PLUS Contains                        | Kilos               |
|---|---------------------|
| COMER Timothy                               | 2.50                |
| LAURA Meadow Fescue                         | 5.00                |
| ABERROOT Festulolium                        | 1.50                |
| ABERHERALD White Clover                     | 0.50                |
| ABERSWAN White Clover                       | 0.50                |
| AURORA Alsike Clover                        | 0.10                |
| PUNA II Chicory                             | 0.10                |
| ENDURE Chicory                              | 0.10                |
| AGRI TONIC Plantain                         | 0.20                |
| <b>Available in 1 Acre (10.5 kilo) bags</b> | <b>Total: 10.50</b> |



**Disclaimer:** Before ordering seed for SFI schemes please see page 59.



# SALVUS

## Long-Term Rejuvenation Mixture

If your ley has suffered from livestock poaching or has struggled due to drought, SALVUS is the solution that will restore your sward to its full potential.

SALVUS is a specially formulated grass and clover mixture designed to rejuvenate damaged leys efficiently, without the need for ploughing. Simply direct drill or broadcast onto your existing sward.

### Why Choose SALVUS?

- » **No Ploughing:** Broadcast or direct drill into your existing ley.
- » **Rapid Establishment:** Quickly restores your damaged field.
- » **Thick, Sweet Sward:** Enhances the quality of your existing ley.
- » **Early Spring Growth:** To feed your stock.
- » **Long-Term Fix:** Creates a long-term ley.

| SALVUS Contains                                      | Kilos               |
|--|---------------------|
| ABERECHO Hybrid Tetraploid Ryegrass                  | 2.70                |
| ABERZEUS Diploid Intermediate Perennial Ryegrass     | 1.30                |
| ABERCLYDE Tetraploid Intermediate Perennial Ryegrass | 2.30                |
| ABERAVON Diploid Late Perennial Ryegrass             | 2.70                |
| ABERHERALD White Clover                              | 0.50                |
| ABERSWAN White Clover                                | 0.50                |
| <b>Available in 1 Acre (10 kilo) bags</b>            | <b>Total: 10.00</b> |

# SALVUS PLUS

## Long-Term Herbal Rejuvenation Mixture

If you are going to apply for SFI CSAM3, then use SALVUS PLUS.

| SALVUS PLUS Contains                                 | Kilos               |
|--|---------------------|
| ABERECHO Hybrid Tetraploid Ryegrass                  | 2.70                |
| ABERZEUS Diploid Intermediate Perennial Ryegrass     | 1.30                |
| ABERCLYDE Tetraploid Intermediate Perennial Ryegrass | 2.30                |
| ABERAVON Diploid Late Perennial Ryegrass             | 2.70                |
| ABERHERALD White Clover                              | 0.50                |
| ABERSWAN White Clover                                | 0.50                |
| AURORA Alsike Clover                                 | 0.10                |
| PUNA II Chicory                                      | 0.10                |
| ENDURE Chicory                                       | 0.10                |
| AGRI TONIC Plantain                                  | 0.20                |
| <b>Available in 1 Acre (10.5 kilo) bags</b>          | <b>Total: 10.50</b> |



Disclaimer: Before ordering seed for SFI schemes please see page 59.



# MERIT

## 3-Year Ley

For a short-term ley that delivers quality early spring grass for your sheep, cattle, or cows, MERIT is the ideal choice.

### Why Choose MERIT?

- » **3 Years of Forage:** Will produce large cuts of quality silage for over 3 years.
- » **Rapid Early Growth:** Ideal for spring grazing, followed by conservation.
- » **Contains ABER Clover Varieties:** To fix nitrogen and improve forage yields.
- » **Autumn/Early Winter Herbage:** Provides valuable feed during colder months.

| MERIT Contains                            | Kilos               |
|---|---------------------|
| ABERECHO Hybrid Tetraploid Ryegrass       | 5.00                |
| ABERIMAGE Tetraploid Ryegrass             | 4.00                |
| FOX Diploid Italian Ryegrass              | 5.00                |
| ABERSWAN White Clover                     | 1.00                |
| <b>Available in 1 Acre (15 kilo) bags</b> | <b>Total: 15.00</b> |

# MERIT PLUS

## 3-Year Herbal Ley

If you are going to apply for SFI CSAM3 then use MERIT PLUS.

| MERIT Contains                              | Kilos               |
|---|---------------------|
| ABERECHO Hybrid Tetraploid Ryegrass         | 5.00                |
| ABERIMAGE Tetraploid Ryegrass               | 4.00                |
| FOX Diploid Italian Ryegrass                | 5.00                |
| ABERSWAN White Clover                       | 1.00                |
| AURORA Alsike Clover                        | 0.10                |
| PUNA II Chicory                             | 0.10                |
| ENDURE Chicory                              | 0.10                |
| AGRI TONIC Plantain                         | 0.20                |
| <b>Available in 1 Acre (15.5 kilo) bags</b> | <b>Total: 15.50</b> |



**Disclaimer:** Before ordering seed for SFI schemes please see page 59.



# TARGET

## Four-Year Red Clover Ley

TARGET is a medium-term red clover ley with persistent ABER perennial ryegrasses to produce a strong sward for grazing or cutting.

### Why choose TARGET

- » **High-Quality Silage:** Three to four cuts of high-quality silage a year, over 4 years.
- » **Improves Soil Structure:** Giving the potential for higher yielding crops after the ley.
- » **Soil Enrichment:** The clover adds residual nitrogen to the soil.
- » **Qualifies for GfE Option 2:** Worth £263 per hectare.

| TARGET Contains                                     | Kilos               |
|---|---------------------|
| ABERZEUS Diploid Intermediate Perennial Ryegrass    | 5.00                |
| ABERSPEY Tetraploid Intermediate Perennial Ryegrass | 1.50                |
| ABERGAIN Tetraploid Late Perennial Ryegrass         | 3.50                |
| ABERROOT Festulolium                                | 1.00                |
| ABERCLARET Red Clover                               | 3.50                |
| AURORA Alsike Clover                                | 0.50                |
| <b>Available in 0.5 hectare (15 kilo) bags</b>      | <b>Total: 15.00</b> |

# PRONTO

## Two-Year Red Clover Ley

PRONTO is a short-term red clover ley which will produce large cuts of high-protein silage over 2+ years.

### Why Choose PRONTO

- » **High-Quality Silage:** With rapid regrowth after cutting or grazing.
- » **Finishing Lambs:** Is particularly good for finishing lambs for market.
- » **Improves Soil Structure:** Rejuvenates the soil, especially after a run of tillage in arable/horticultural crops.
- » **Soil Enrichment:** The clover adds residual nitrogen to the soil.
- » **Qualifies for GfE Option 2:** Worth £263 per hectare.

| PRONTO contains                                | Kilos               |
|--|---------------------|
| ABERECHO Hybrid Tetraploid Ryegrass            | 5.00                |
| ABERIMAGE Hybrid Tetraploid Ryegrass           | 4.40                |
| ABERAVON Diploid Late Perennial Ryegrass       | 2.50                |
| ABERROOT Festulolium                           | 1.10                |
| ABERCLARET Red Clover                          | 3.50                |
| AURORA Alsike Clover                           | 0.50                |
| <b>Available in 0.5 hectare (17 kilo) bags</b> | <b>Total: 17.00</b> |



**Disclaimer:** Before ordering seed for GfE schemes please see page 59.



# PROTECT

## Early Growing Short-Term One Year Ley

Protect is a blend of diploid and tetraploid Italian ryegrasses to produce a thicker, denser sward.

Italian ryegrasses are known for their rapid establishment and early spring growth.

### Why Choose PROTECT?

- » For Grazing Between Successive Cereal Crops.
- » For Grazing and a Hay/Silage Crop After Cereals.
- » To Produce Emergency Forage.
- » Qualifies for SFI SOH4: Worth £82.15 per acre.

| PROTECT Contains                   | Kilos               |
|------------------------------------|---------------------|
| Tetraploid Hybrid Ryegrass         | 7.50                |
| Diploid Italian Ryegrass           | 7.50                |
| Available in 1 Acre (15 kilo) bags | <b>Total:</b> 15.00 |

## Westerwolds (Annual) Ryegrass Short-Term 6 Month Cover Crop for Light Soils

Westerwolds (*Lolium westerwoldicum*) have traditionally been used as a short term, stop gap, cover crop.

The seeds of Westerwolds are vary large compared to those of perennial ryegrass, meaning a higher seed rate of at least 15 kilos per acre needs to be sown to produce good cover.

Westerwolds will grow quickly after sowing but can produce a thin base herbage sward which quickly goes to head irrespective of when it has been sown.

Due to its open method of growing, Westerwolds are not considered suitable for grazing, unless grown on very free draining, light soil.

Westerwolds are recommended for very short-term harvesting of approximately 6 months after sowing.

Available in 1 Acre (15 kilo) bags



**Disclaimer:** Before ordering seed for SFI schemes please see page 59.





# PREMIUM

## 6-Month Grass Cover Crop

PREMIUM is specifically designed as a cover crop for undersowing spring-sown cereals, enhancing your cereal tillage crop rotations.

When used with a spring WS Cereal Blend (see page 42) or a Combicrop® (see page 46), PREMIUM improves the soil structure, captures residual nitrogen and other nutrients, and so enhances soil fertility.

The grasses used in this mixture have been selected so that they will not grow through the cereal crop and will not cause problems at harvest.

PREMIUM can also be used as an effective winter cover crop, sown after winter-sown cereals have been harvested. On cultivated land prone to nitrate leaching or land draining directly into a watercourse, it provides a dense cover that protects the soil from erosion and runoff.

### Why Choose PREMIUM?

- » **Improved Sustainability:** Of spring cereal cropping.
- » **Extended Grazing:** Provides 6 months of clean, worm-free grazing from autumn (post-harvest) until spring (before ploughing for the next crop).
- » **Winter Wildlife Cover:** Offers protection for wildlife during winter.
- » **Better Soil Structure:** Improves soil texture and reduces erosion.
- » **Increased Soil Fertility:** Enhances nutrient content and overall soil health.
- » **Environmental Protection:** Guards against soil erosion and nitrate leaching.
- » **Qualifies for SFI OFA6:** Worth £153.78 per acre.
- » **Qualifies for SFI SOH4:** Worth £82.15 per acre.
- » **Qualifies for SFI CIPM3:** Worth £22.26 per acre.

| PREMIUM Contains                                    | Kilos               |
|---|---------------------|
| ABERAVON Diploid Late Perennial Ryegrass            | 14.00               |
| ABERDAI White Clover                                | 1.00                |
| Available in 15 kilo bags. Sow at 5 kilos per Acre. | <b>Total:</b> 15.00 |



**Disclaimer:** Before ordering seed for SFI schemes please see page 59.



# Why Farmers are Turning to PREMIUM

A couple of farming generations ago, when tillage farming was less intense, grass reseeding was often carried out under combined spring cereal crops. While this approach provided post-harvest grazing, there were often problems of the grass dominating the cereal crop, making combining very difficult – especially in a wet year.

The practice of under-sowing combined crops also frequently resulted in poorly established grass leys. These leys then required additional seed or grazing in autumn to thicken them. The leys were used for a year or two, yielding only half their potential, before being ploughed up and the process repeated.

As spring cereal cropping became more intense, farming moved away from the practice of under-sowing and the problems it created.

PREMIUM is designed to be sown at 5 kilos per acre under a spring cereal crop (such as our WS Cereal Blends or Combicrops®) and will give the following benefits:

- » It will not compromise the cereal crop at harvest time.
- » It will survive under a spring cereal crop.
- » It will produce clean worm free grazing from post-harvest until ploughing in spring for the next crop.
- » It has a low seed cost per acre.
- » It helps you comply with new government soil management requirements.
- » It can be sown after harvest of winter cereals.
- » Best of all, there are Agri-grant schemes available that mean you get paid for growing it!

However, government requirements for sustainable soil management have renewed interest in cover crops to reduce erosion and retain soil health.

Several years ago, following extensive trials, we introduced PREMIUM – our specialised grass/clover herbage mixture designed specifically as a cover crop for tillage and stock farmers.

By offering a practical and economical approach to maintaining soil health, PREMIUM helps farmers meet sustainability targets while supporting the efficiency and productivity of modern tillage systems.





# PRIZE

## Quality Grazing for Horses

Paddocks used for grazing horses and ponies need different grasses from those used for farm livestock.

Agricultural grass mixtures are often sold as suitable for horse paddocks. They are not.

Agricultural grass mixtures contain high-sugar ryegrasses which have been bred to produce rapid weight gain and high milk production when fed to livestock. Also, when kept at the young stage by grazing, these ryegrasses are low in fibre.

These characteristics make such mixtures unsuitable for feeding to horses (whether as grazing or as hay/haylage).

PRIZE is our specialised ryegrass-free mixture designed specifically for horses and ponies.

### Why Choose PRIZE?

- » **Ryegrass-Free Formula:** Helps prevent health issues like laminitis, Cushing's disease, and Equine Metabolic Syndrome (EMS).
- » **Higher in Fibre:** The grasses used in PRIZE have a higher fibre content compared to agricultural ryegrass mixtures.
- » **Long-Lasting Pasture:** Provides first-class grazing for your horses that lasts for many years with proper management.
- » **High-Quality Hay or Haylage:** Also suitable for producing excellent hay or haylage for horses, if needed.

| PRIZE Contains                            | Kilos               |
|---|---------------------|
| COMER Timothy                             | 3.00                |
| LAURA Meadow Fescue                       | 4.00                |
| CONNI Smooth Stalked Meadow Grass         | 1.50                |
| CORIAL Strong Creeping Red Fescue         | 1.00                |
| RIDU Hard Fescue                          | 0.50                |
| <b>Available in 1 Acre (10 kilo) bags</b> | <b>Total: 10.00</b> |



# LUCERNE

## High-Protein Cutting Forage for Dry Areas

LUCERNE is particularly useful in areas with low rainfall, such as dry coastal regions and rain shadow areas inland.

It prefers deep, free-draining soil with a lime analysis of pH7 or higher and given the right conditions, will provide a reliable source of high-quality forage.

Western Seeds only offers varieties specifically suited to the U.K.'s colder, wetter winters, avoiding Southern European types that would struggle to thrive.

### Why Choose LUCERNE?

- » **Provides Impressive Fodder Quantities:** Yields abundant cut forage, ensuring consistent feed supply in areas of low rainfall.
- » **High Protein Content:** Produces a high-protein forage that complements high-starch wholecrop, contributing to a balanced, quality forage diet.
- » **Deep Rooting:** Ensures resilience in dry conditions and long-term soil health.
- » **Fixes its own Nitrogen:** Requires only phosphate and potash, or NPK from farm manure, due to its ability to fix nitrogen through its root symbiosis.
- » **Qualifies for GfE Option 2:** Worth £263 per hectare.

Sow at 20–25 kilos per hectare



Disclaimer: Before ordering seed for GfE schemes please see page 59.





# Herbs and Clover

## PUNA II Chicory

PUNA II Chicory is a robust, broad-leaved perennial forage crop which will provide high yields of very palatable feed for grazing livestock. It has a rich mineral content, including zinc, potassium, and copper, ensuring a nutritious diet for your animals.

PUNA II is drought-tolerant and recovers quickly after grazing.

Available in 1 kilo packs

## AGRI TONIC Plantain

AGRI TONIC is a specialised forage plantain ideal for dry summer conditions. It is rich in essential minerals and offers easily digestible forage for livestock, making it a valuable addition to your grazing.

Available in 1 kilo packs

## QUATRO

### General Purpose Herb Mixture

QUATRO is a versatile herb mixture containing a balanced blend of four herbs chosen for their deep root systems and palatability to all types of livestock.

| QUATRO Contains           | Kilos              |
|---------------------------|--------------------|
| AGRI TONIC Plantain       | 0.55               |
| PUNA II Chicory           | 0.30               |
| BURNET Herb               | 0.10               |
| YARROW Herb               | 0.05               |
| Available in 1 kilo packs | <b>Total:</b> 1.00 |



## SELECT

### Rejuvenation Clover Blend

SELECT is designed to rejuvenate the clover content in established leys, making it suitable for grant scheme SFI NUM2.

It includes both large and medium clover varieties, selected for their palatability and persistence.

#### Why Choose SELECT?

- » **Rejuvenates Your Ley:** Restores clover to your ley
- » **Enhances Grass Growth:** Clovers produce free nitrogen to improve grass yield.
- » **Provides Palatable Forage:** Increases the intake of grass and clover, boosting milk, beef, and lamb production.
- » **Qualifies for SFI NUM2:** Worth £41.28 per acre.

| SELECT Contains  | Kilos               |
|--|---------------------|
| ABERHERALD White Clover                                | 6.00                |
| ABERSWAN White Clover                                  | 4.00                |
| Available in 10 kilo packs. Sow at 1-2 kilos per Acre. | <b>Total:</b> 10.00 |

## FORTIFY

### Over-Seeding Herb and Legume Mixture

FORTIFY can be used as an over-seeding mixture to replenish the herbs and clover in an existing ley, so meeting the criteria for environmental scheme SFI CSAM3 (worth £154.59 per acre).

| FORTIFY Contains                                     | Kilos               |
|--|---------------------|
| ABERHERALD White Clover                              | 7.00                |
| PUNA II Chicory                                      | 1.25                |
| AGRI TONIC Plantain                                  | 1.25                |
| Alsike Clover  | 0.50                |
| Available in 10 kilo packs. Sow at 2 kilos per Acre. | <b>Total:</b> 10.00 |



**Disclaimer:** Before ordering seed for SFI schemes please see page 59.



# Why Farmers Choose WS Arable Silage Mixtures



A well-established, productive ley is important for farmers: providing quality forage for their stock whilst rejuvenating and enriching the soil.

WS Arable Silage mixtures are specially developed for U.K. farmers who want a reliable way to establish a strong and healthy new ley in the spring, irrespective of the weather conditions.

**WS Arable Silage mixtures are unique and should not be confused with wholecrops being marketed as “Arable Silage”.**

Wholecrop is harvested at the cheesy stage (typically 15-16 weeks post-sowing). Having the wholecrop on your new re-seed for this length of time results in the valuable grass being lost due to lack of light. The thin, weedy ley that is left then doesn't perform well.

WS Arable Silage is ready to harvest in just 9 to 10 weeks, allowing the newly sown grass ley to thrive.

## Why Choose WS Arable Silage?

- » **Reliable Establishment of New Ley:** Proven, whatever the weather, to produce a good a thick, worm-free, weed-free ley in as little as 9 to 10 weeks, allowing your fields to be productive sooner.
- » **Contains Forage Peas:** Bulk up quickly, increasing the yield and protein content of the arable silage.
- » **No Grain in the Bales:** Less attractive to rodents.
- » **High Yields:** Achieve 6+ large bales of arable silage per acre (approximately 600 kilos each), making up for any loss of herbage when sowing grass in spring.
- » **Fixes Nitrogen:** The forage peas fix nitrogen to kick-start your new ley
- » **Enhanced Clover Growth:** Provides better conditions for the successful establishment of clover, particularly red clover.



# REWARD

## Arable Silage

- Spring Barley Blend
- Spring Forage Pea Blend

Sowing rate: 50 kilos per acre



# LIBERTY

## Arable Silage

- Spring Oats Blend
- Spring Forage Pea Blend

Sowing rate: 50 kilos per acre



## New:

# REWARD PLUS and LIBERTY PLUS

If you suffer with pigeons or crows, then REWARD PLUS or LIBERTY PLUS is the answer.

REWARD PLUS and LIBERTY PLUS contain vetch as well as the forage peas, so even if crows or pigeons eat some of the peas, the arable silage will still perform.

Sowing rate: 50 kilos per acre







# RAPID

## Rape/Kale/Stubble Turnip mixture

RAPID is a first-class blend of forage rape and leafy stubble turnip. It is fast to establish and produces a very palatable high-protein crop for all stock.

- Direct drill at 3 kilos per acre
- Broadcast at 4 kilos per acre

### RAPID Contains

|       |                          |
|-------|--------------------------|
| 50.0% | HOBSON Forage Rape       |
| 29.7% | VOLLEND A Stubble Turnip |
| 10.0% | SAMPSON Stubble Turnip   |
| 10.0% | RONDO Stubble Turnip     |
| 0.3%  | KEEPER Kale              |

Available in 12 kilo bags

Qualifies for GfE Option 4 (worth £61.11 per acre)



# SPRINT

## Forage Rape mixture

SPRINT is a top quality mixture containing two high-yielding forage rape varieties. This mixture helps to reduce leaf disease. Crops with less disease have higher yields and are more palatable to stock. SPRINT produces a very thick crop for feeding to all stock.

- Direct drill at 3 kilos per acre
- Broadcast at 4 kilos per acre

### SPRINT Contains

|     |                      |
|-----|----------------------|
| 80% | HOBSON Forage Rape   |
| 20% | INTERVAL Forage rape |

Available in 12 kilo bags

Qualifies for GfE Option 4 (worth £61.11 per acre)



# TEMPO

## Stubble Turnip mixture

TEMPO is a mixture of two first-class varieties of stubble turnips. This combination reduces leaf disease and increases stock intake. It has very fast establishment and excellent high yields making it ideal for sheep, beef and dairy cattle.

- Direct drill at 2 kilos per acre
- Broadcast at 3 kilos per acre

### TEMPO Contains

|     |                          |
|-----|--------------------------|
| 33% | RONDO Stubble Turnip     |
| 33% | SAMPSON Stubble Turnip   |
| 34% | VOLLEND A Stubble Turnip |

Available in 12 kilo bags

Qualifies for GfE Option 4 (worth £61.11 per acre)



Disclaimer: Before ordering seed for GfE schemes please see page 59.



# Brassica Plus Mixtures

Our Brassica Plus mixtures combine all the benefits of our forage brassica mixtures with the additional benefits of added vetch which:

- Improves the palatability of the feed
- Increases soil nitrogen availability for future cropping in the spring
- Gives the possibility of grazing the vetch in spring, before ploughing.

## SPRINT PLUS

### Forage Rape & Vetch Mixture

#### SPRINT PLUS Contains

- 70% EBENA Vetch
- 20% HOBSON Forage Rape
- 10% INTERVAL Forage rape

Direct Drill or Broadcast. Available in 10 kilo (1 Acre) bags.

## RAPID PLUS

### Rape/Kale/Stubble Turnip & Vetch Mixture:

#### RAPID PLUS Contains

- 70.0% EBENA Vetch
- 12.0% HOBSON Stubble Turnip
- 9.7% VOLLEND A Stubble Turnip
- 4.0% SAMPSON Stubble Turnip
- 4.0% RONDO Stubble Turnip
- 0.3% KEEPER Kale

Direct Drill or Broadcast. Available in 10 kilo (1 Acre) bags.



# TEMPO PLUS

## Stubble Turnip & Vetch Mixture

### TEMPO PLUS Contains

- 70% EBENA Vetch
- 10% VOLLEND A Stubble Turnip
- 10% SAMPSON Stubble Turnip
- 10% RONDO Stubble Turnip

Direct Drill or Broadcast. Available in 10 kilo (1 Acre) bags.

## New: ZIPPY PLUS

### Brassica Multi-Species Cover Crop

ZIPPY PLUS is a multispecies brassica cover crop suitable for environmental scheme SFI CSAM2 (worth £52.20 per acre).


### ZIPPY PLUS Contains

- 70% EBENA Vetch
- 12% SAMPSON Stubble Turnip
- 12% HOBSON Forage Rape
- 3% MARIS KESTREL Kale
- 3% ALSIKE Clover

Direct Drill or Broadcast. Available in 10 kilo (1 Acre) bags.



**Disclaimer:** Before ordering seed for SFI schemes please see page 59.



# HUMBOLT Grazing Rye

## Economical & Reliable High-Quality Forage

HUMBOLT grazing rye is a leafy variety designed to be grazed. it is NOT to be confused with a combining rye.

HUMBOLT grazing rye saves you feed by providing an early bite of high-quality forage for dairy, beef and early lambing ewes. For dairy/beef cattle it gets the rumen used to green material.

### Why Choose HUMBOLT Grazing Rye?

- » **High-Quality Forage:** Provides an early bite of high-quality forage (grazed or zero-grazed), ideal when winter feed or early grazing areas are in short supply.
- » **Flexible Sowing:** Can be sown as late as mid-November (weather permitting)
- » **Improves Soil Structure:** Enhances soil health by promoting humus development with a strong, fibrous root system
- » **Reduces Erosion:** Helps stabilise soil and reduce erosion over the winter months.
- » **Minimises Nutrient Loss:** Helps retain soil nutrients over winter, reducing the risk of water pollution in nearby streams and rivers.
- » **Weed Suppression:** Significantly reduces weed growth through autumn, winter and spring and significantly reduces the germination of spring weeds when incorporated into the soil by ploughing.
- » **Qualifies for SFI SOH4:** Worth £82.15 per acre.

### Seeding Information:

- » **Sowing Time:** September – October/Mid-November
- » **Seeding Rate:** 65 kilos per acre
- » **Field Requirements:** Free-draining, dry, sheltered fields preferred



**Disclaimer:** Before ordering seed for SFI schemes please see page 59.



# HUMBOLT PLUS

## Grazing Rye with Vetch

HUMBOLT PLUS contains 20% vetch. It gives you all the benefits of HUMBOLT grazing rye with the added benefit of soil nitrogen enhancement from the vetch.

This mixture is designed to support sustainable agriculture by improving soil health and future crop yields.

### Why Choose HUMBOLT PLUS?

- » **All the Benefits of HUMBOLT:** See page 38.
- » **Produces its Own Nitrogen:** The vetch provides nitrogen for the crop to use.
- » **High Protein Feed:** The vetch is high in protein
- » **Qualifies for SFI CSAM2:** Worth £52.20 per acre.
- » **Qualifies for SFI SOH4:** Worth £82.15 per acre.

### Seeding Information:

- » **Sowing Time:** September – October/Mid-November
- » **Seeding Rate:** 65 kilos per acre
- » **Field Requirements:** Free-draining, dry, sheltered fields preferred



**Disclaimer:** Before ordering seed for SFI schemes please see page 59.



## MASSIF Turnips

### Cost-Effective Winter Feed

Massif is a winter hardy, yellow-fleshed turnip that produces very large roots in a short growing period.

It can be grazed from the end of November through to February, providing a high energy, high dry matter winter feed for dairy, beef and sheep.

#### Sowing Options:

- » **Direct Drill:** 2 kilos per acre.
- » **Broadcast:** 3 kilos per acre



## LOMOND Swede

### Versatile, High-Energy Feed

LOMOND swede is a versatile crop that can be grown on various soil types, including sandy loams, silts, peat, and clay loams. It is especially valuable for finishing lambs and provides a reliable, high-energy feed.

#### Why Choose LOMOND Swede?

- » **High energy feed:** Excellent for finishing lambs, offering a cost-effective and energy-rich food source.
- » **Impressive dry matter yield:** Produces 2.8 to 4.0 tonnes per acre with 82% digestibility, ensuring high nutritional value.
- » **Adapted for U.K. conditions:** Bred in Scotland, it is well-suited to the U.K. climate and growing conditions.
- » **Disease resistance:** Shows good tolerance to powdery mildew and clubroot, and is less prone to rots and root splits.
- » **Suitable for human consumption:** In addition to animal feed, LOMOND swede is also good for human consumption.

#### Sowing Options:

- » **Precision drilling:** Available as Grade H seed for precision drilling at 250-350 grams per acre.
- » **Direct drilling or broadcasting:** Available as Natural seed for direct drilling at 1 kilo per acre or broadcasting at 2 kilos per acre.



# KEEPER Kale

## Fast-Growing, Winter-Hardy Forage

KEEPER kale is a medium/short leafy variety that thrives in medium loam soils with a pH of around 6.5.

### Why Choose KEEPER?

- » **High Yields:** Produces greater yields compared to rape/kale hybrids, ensuring more feed.
- » **Fast-Growing:** Quickly establishes, providing a reliable forage option.
- » **Winter Hardy:** Excellent resistance to harsh winter conditions, ensuring crop survival and availability.
- » **Good Lodging Resistance:** Stands well in the field, reducing crop loss.
- » **Low SMCO Levels:** Contains low levels of anti-nutritional chemicals, improving its suitability for animal consumption.
- » **High Crude Protein Content:** Delivers excellent nutrition, making it ideal for finishing lambs and providing quality winter feed.
- » **Flexible Utilisation Period:** Can be used over an extended period, offering flexibility in feed management.

### Sowing Options:

- » **Direct Drill:** 1-2 kilos per acre.
- » **Broadcast:** 3 kilos per acre.



# Western Seeds (WS) Spring Cereal Blends

## More Crop in Your Pocket

For too long, farmers have focused on maximising cereal yields at any cost, ignoring the significant expenses of the various inputs needed to do this and the environmental damage these inputs cause.

The skyrocketing prices of nitrogen, herbicides, fungicides, and insecticides used in conventional cereal farming and the governments focus on environmentally friendly farming practices present a tough choice for farmers. They can either cut back on the costly inputs and face reduced yields, or continue using them and watch profitability slip away.

At Western Seeds, we have dedicated over 40 years to the research and development of our Spring Cereal Blends.

Our expertly formulated cereal blends have repeatedly demonstrated their ability to significantly reduce, or even eliminate, all cereal foliar diseases. Most farmers growing our cereal blends only apply seed-bed NPK and a pre-emergence herbicide spray. They then leave the crop alone until harvest. This means those who have adopted WS Spring Cereal Blends consistently report enhanced profitability.

If you haven't yet considered a WS Cereal Blend, now is the perfect time to make the change. Experience the benefits for yourself in spring 2025 and see how our blends can revolutionise your cereal farming.



### **Beware of imitations!**

As pioneers in the field we are frequently copied, but we stand by the superior quality of our WS Spring Cereal Blends. Their growing popularity with farmers is a testament to their effectiveness, as more and more customers experience their benefits firsthand.



# OVATION

## Spring Wheat Blend

OVATION is a reliable, high-yielding, disease-resistant spring wheat crop that meets the needs of modern farming.

Many modern spring wheat varieties depend heavily on fungicides to remain disease-free and produce a good grain crop.

OVATION is a blend of wheat varieties meticulously selected by Western Seeds. The varieties in OVATION not only ripen simultaneously but also offer excellent resistance to cereal fungal diseases and can, therefore, be grown without the use of expensive fungicides.

### Why Choose OVATION?

- » **High Yields:** Consistently produces good yields.
- » **Disease Resistance:** Naturally more resistant to cereal fungal diseases, no fungicides needed.
- » **Quality Production:** Delivers top-quality grain and straw.
- » **Versatile:** Combine dry, crimp or wholecrop.
- » **Qualifies for GfE Option 5 and Option 6:** Worth £88.63 and £141.23 per acre.

Sowing rate: 100-125 kilos per acre

**OVATION is available in 600 kilo, 300 kilo, and 25 kilo bags, mixed and ready for despatch.**



We recommend under-sowing OVATION with PREMIUM to maximise the productivity and profitability of the field (see page 26). PREMIUM qualifies for environmental scheme SFI CIPM3 (worth £22.26 per acre).



**Disclaimer:** Before ordering seed for GfE schemes please see page 59.





# ADVANCE

## Spring Barley Blend

ADVANCE is a carefully selected blend of barley varieties, chosen specifically by Western Seeds. This blend is resilient against the variable yearly conditions in weather, soil fertility, and field environments, ensuring consistent performance.

Western Seeds continually updates ADVANCE with new, relevant spring barley varieties from plant breeders, rigorously testing them at our trial sites before marketing.

### Why Choose ADVANCE?

- » **Disease Resistance:** Offers greater resistance to crop diseases, using resulting in better grain quality, stronger straw, and higher yields, without the use of expensive fungicides.
- » **Proven Performance:** Grown by farmers for over 27 years, consistently achieving high yields
- » **Synchronized Ripening:** Contains varieties that ripen simultaneously.
- » **Versatile Use:** Suitable for combining dry, crimping, or wholecrop for animal feed.
- » **Qualifies for GfE Option 5 and Option 6:** Worth £88.63 and £141.23 per acre.

Sowing rate: 75-100 kilos per acre.

**Not for Malting:** Not intended for malting, as maltsters require single barley varieties.

**ADVANCE is available in 600 kilo, 300 kilo, and 25 kilo bags, mixed and ready for despatch.**



**Disclaimer:** Before ordering seed for GfE schemes please see page 59.



We recommend under-sowing ADVANCE with PREMIUM to maximise the productivity and profitability of the field (see page 26). PREMIUM qualifies for environmental scheme SFI CIPM3 (worth £22.26 per acre).



# CONCERT

## Spring Oat Blend

CONCERT is a top-performing oat blend that consistently out-performs the results of single oat plantings, helping farmers achieve quality, high yields with their oat crops.

Made from a carefully selected mix of oat varieties, it is highly resistant to variations in weather, fertility, and field conditions, making it a more reliable choice than single oat varieties.

### Why Choose CONCERT?

- » **Disease Resistance:** Exhibits lower crop disease, resulting in a better grain sample, stronger straw, and higher yields without the use of expensive fungicides.
- » **High Yields:** Consistently produces good yields.
- » **Reliable:** More resistant to varying yearly conditions in weather, soil fertility, and field environments.
- » **Synchronized Ripening:** Contains oat varieties that ripen simultaneously.
- » **Versatile:** Suitable for combining dry, crimping, or whole-cropping, providing flexibility for use as animal feed.
- » **Preferred by Millers:** Produces a consistently high-quality grain sample, favoured by major millers.
- » **Qualifies for GfE Option 5 and Option 6:** Worth £88.63 and £141.23 per acre.

**Sowing rate:** 75 kilos per acre.

**CONCERT is available in 600 kilo, 300 kilo, and 25 kilo bags, pre-mixed and ready for despatch.**



We recommend under-sowing CONCERT with PREMIUM to maximise the productivity and profitability of the field (see page 26). PREMIUM qualifies for environmental scheme SFI CIPM3 (worth £22.26 per acre).



**Disclaimer:** Before ordering seed for GfE schemes please see page 59.



# Combicrop®

## Grow Your Own Concentrate

### What is Combicrop®?

Combicrop® is a unique, registered product developed by the R&D team at Western Seeds designed to be combined.

Unlike imitators with similar names, Combicrop® is a reliable, proven solution for modern farming. For years, farmers across the U.K. have successfully incorporated Combicrop® into their rotations with remarkable results.

Combicrop® isn't just another feed crop - it is a comprehensive solution that delivers superior protein, enhances livestock performance, and contributes to a healthier, more sustainable farming system.

### Why the Growing Interest in Combicrop®?

As farmers, we know that finding a sustainable, cost-effective, and home-grown source of protein for livestock is essential. Traditional protein sources like lupins, beans, or cereals each have their benefits - but none quite compare to the versatility and advantages offered by peas.

| Constituent      | Lupins<br>(% as fed) | Beans<br>(% as fed) | Peas<br>(% as fed) | Wheat<br>(% as fed) |
|------------------|----------------------|---------------------|--------------------|---------------------|
| PROTEIN          | 35                   | 29                  | 23                 | 11                  |
| STARCH           | <1                   | 44                  | 44                 | 59                  |
| NDF <sup>1</sup> | 22.4                 | 15.9                | 9.8                | 7.7                 |
| ADF <sup>2</sup> | 18.9                 | 10.7                | 5.8                | 3.1                 |

1 NDF (Neutral Detergent Fibre) - Higher percentage number means lower feed intake

2 ADF (Acid Detergent Fibre) - Higher percentage number means a lower digestibility

Among the key benefits of peas:

- **Superior Digestibility:** Peas are easier for livestock to digest, leading to better nutrient absorption.
- **Enhanced Palatability:** Livestock are more likely to consume peas readily, reducing feed waste.
- **High Starch Content:** Peas provide valuable energy in addition to protein, ensuring a balanced diet.
- **Versatile Feed:** Peas can be fed to a wide range of animals in higher concentrations, making them a flexible choice for farmers.

### Combicrop® Makes Growing Peas Easier

In the U.K. growing peas as a mono-crop can be extremely challenging due to disease, weather issues, and harvesting difficulties. These problems make peas a risky crop to grow. Combicrop® provides a simple, reliable solution.

Each Combicrop® mixture contains a carefully formulated blend of spring cereals and spring combinable peas. The varieties used in these unique mixtures ensure not only that you get the protein content you need, but also that the peas are easier to grow and safer to harvest.

The blend of cereals used in each Combicrop® mixture are proven to reduce the incidence of foliar diseases, keeping your crop strong and resilient.

If you can grow cereals, you can grow Combicrop®.







## Profitable and Sustainable to Grow

For farmers, profitability is crucial. Combicrop® contains 50% more protein than straight cereals.

This increased protein content (ranging from 13% to 18%) allows you to produce a high-quality concentrate for your livestock without needing to buy expensive supplemental protein. And you don't lose out on starch levels either - Combicrop® provides a balanced nutrient profile for optimal livestock performance.

On-farm trials have shown that feeding Combicrop® results in increased animal productivity across the board. Even the straw from the combined crop is highly palatable and makes excellent feed, adding another valuable resource for your farm.

Combicrop® grown as a cash crop achieves a higher market price due to its higher protein content.

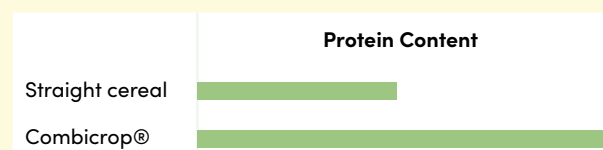
After harvest the peas and cereal can be easily separated for marketing, if required.

## Beneficial for Soil Health

Combicrop® offers more than just feed benefits - it also supports a healthier farm ecosystem.

The peas in Combicrop® produce nitrogen for the crop to use and produces residual nitrogen for the following crop too.

Independent research from Europe has demonstrated that Combicrop® encourages higher earthworm counts in the soil, contributing to improved soil health and fertility.



Combicrop® enables you to grow a 13% to 18% protein concentrate. So eliminating the expense of buying in protein without decreasing starch levels.



## Using Combicrop®

Combicrop® gives you an early and reliable harvest that's simple to grow. If you're already growing cereals, you'll find Combicrop® just as easy to manage.

Whilst designed to be combined, Combicrop® can be used in various ways to provide high-quality, high-protein, and high-starch feed for your livestock.

## Combicrop® Combined Dry

When harvested dry, Combicrop® yields a protein percentage approximately 50% higher than straight cereals. Once rolled, the cereal and pea blend produces a ready-made concentrate with 13% to 18% protein content.

The cereal straw and pea haulm from Combicrop® also offer excellent feed value, with the crop's resistance to foliar diseases enhancing the quality of the straw.





## Combicrop® Crimped

Crimping Combicrop® simplifies your winter feed management by eliminating the need for rolling dry grain.

Harvesting earlier for crimping enhances the cereal's feeding value and provides you with high-quality cereal/pea haulm straw.

However, please note that the higher protein content in crimped Combicrop® requires a specialised additive for preservation, distinct from those used for straight cereal crimp additives.



## Wholecropping Combicrop®

Combicrop® can also be wholecropped. This can be fermented at 25% to 45% dry matter or preserved at 50% to 70% dry matter, offering flexibility based on your specific needs.





# GfE Combicrop®

Under Option 7 and Option 8 of the Welsh “Growing for the Environment” Agri Scheme, grants are available for growing unsprayed cereal and protein crops (see page 7-8).

To qualify for these grants, the mixture sown must contain **50% Cereal and 50% protein seed by weight**. Our GfE Combicrops® have been specifically formulated to meet the criteria for these two options.

## Why Choose GfE Combicrops®

- » **Versatile Mixtures:** Available as a barley/pea, wheat/pea, oat/pea or barley/oat/wheat/pea mixture to meet your forage requirements.
- » **High-Yields:** Produces a total crop yield equal and often higher than straight cereals.
- » **Flexible Harvest Options:**
  - » **Combine Dry:** Produces a high-starch feed concentrate meal with 13% to 18% protein, 50% to 60% more than straight wheat.
  - » **Combined Crimped:** Generates a high-quality starch and protein concentrate for dairy cows, followers, and fattening/finishing beef cattle.
  - » **Wholecrop Fermented:** Harvest at 25% to 45% dry matter to use alone or with grass silage as forage for stock.
  - » **Wholecrop Fermented/Preserved:** Harvest at 50% to 70% dry matter for feeding with other conserved forage.
- » **Produces Its Own Nitrogen:** The peas provide nitrogen for the crop during growth and free residual nitrogen for the following crop.
- » **Is A Soil Conditioner:** Significantly improves soil structure post-harvest.
- » **Qualifies for GfE Option 7:** Worth £91.05 per acre
- » **Qualifies for GfE Option 8:** Worth £141.24 per acre

Sowing rate: 100 kilos per acre

**Available in 600 kilo, 300 kilo, and 25 kilo bags, mixed and ready for despatch.**

 GfE

**Disclaimer:** Before ordering seed for GfE schemes please see page 59.



# CHAMPION

## Combicrop®

CHAMPION is a unique blend of spring wheats and combining peas that allows you to easily and profitably grow your own high-protein, high-starch feed.

CHAMPION is designed to reduce disease susceptibility and enhance crop yields. This blend often yields as much, and in many cases more, than straight wheat - making it an excellent choice for farmers.

### Why Choose CHAMPION Combicrop®?

- » **High-Yields:** Produces a total crop yield equal and often higher than straight wheat.
- » **Versatile Harvest Options:**
  - » **Combine Dry:** Produces a high-starch feed concentrate meal with 13% to 18% protein, 50% to 60% more than straight wheat.
  - » **Combined Crimped:** Generates a high-quality starch and protein concentrate for dairy cows, followers, and fattening/finishing beef cattle.
  - » **Wholecrop Fermented:** Harvest at 25% to 45% dry matter to use alone or with grass silage as forage for stock.
  - » **Wholecrop Fermented/Preserved:** Harvest at 50% to 70% dry matter for feeding with other conserved forage.
- » **Produces Its Own Nitrogen:** The peas provide nitrogen for the crop during growth and free residual nitrogen for the following crop.
- » **Is A Soil Conditioner:** Significantly improves soil structure post-harvest.
- » **Reduced Disease Susceptibility:** Can be grown without insecticides to qualify for SFI CIPM4, worth £18.21 per acre.
- » **Qualifies for SFI CIPM3:** Worth £22.26 per acre.

**Sowing rate:** 100 to 120 kilos per acre.

**Available in 600 kilo, 300 kilo, and 25 kilo bags, mixed and ready for despatch.**

We recommend under-sowing CHAMPION with PREMIUM to maximise the productivity and profitability of the field (see page 26).



Disclaimer: Before ordering seed for SFI schemes please see page 59.







# WINNER

## Combicrop®

WINNER is a unique blend of spring barleys and combining peas that allows you to easily and profitably grow your own high-protein, high-starch feed.

WINNER is designed to reduce disease susceptibility and enhance crop yields. This blend often yields as much, and in many cases more, than straight barley - making it an excellent choice for farmers.

### Why Choose WINNER Combicrop®?

- » **High-Yields:** Produces a total crop yield equal to and often higher than straight barley.
- » **Versatile Harvest Options:**
  - » **Combine Dry:** Produces a high-starch feed concentrate meal with 13% to 18% protein, 50% to 60% more than straight barley.
  - » **Combined Crimped:** Generates a high-quality starch and protein concentrate for dairy cows, followers, and fattening/finishing beef cattle.
  - » **Wholecrop Fermented:** Harvest at 25% to 45% dry matter to use alone or with grass silage as forage for stock.
  - » **Wholecrop Fermented/Preserved:** Harvest at 50% to 70% dry matter for feeding with other conserved forage.
- » **Palatable, Nutritious Straw:** The straw is particularly good for feeding to stock
- » **Produces Its Own Nitrogen:** The peas provide nitrogen for the crop during growth and free residual nitrogen for the following crop.
- » **Is A Soil Conditioner:** Significantly improves soil structure post-harvest.
- » **Reduced Disease Susceptibility:** Can be grown without insecticides to qualify for SFI CIPM4, worth £18.21 per acre.
- » **Qualifies for SFI CIPM3:** Worth £22.26 per acre.

**Sowing rate:** 100 kilos per acre.

**Available in 600 kilo, 300 kilo, and 25 kilo bags, mixed and ready for despatch.**

We recommend under-sowing WINNER with PREMIUM to maximise the productivity and profitability of the field (see page 26).



Disclaimer: Before ordering seed for SFI schemes please see page 59.



# VICTOR

## Combicrop®

VICTOR is a unique blend of spring oats and combining peas that allows you to easily and profitably grow your own high-protein, high-starch feed.

VICTOR is designed to reduce disease susceptibility and enhance crop yields. This blend often yields as much, and in many cases more, than straight oats – making it an excellent choice for farmers.

VICTOR is best sown as your last combining crop in your tillage rotation as it will yield better than other Combicrops® in lower fertility situations.

### Why Choose VICTOR Combicrop®?

- » **High-Yields:** In lower fertility situations. Produces a total crop yield equal to and often higher than straight oats.
- » **Versatile Harvest Options:**
  - » **Combine Dry:** Produces a high-starch feed concentrate meal with 13% to 18% protein, 50% to 60% more than straight barley.
  - » **Wholecrop Fermented:** Harvest at 25% to 45% dry matter to use alone or with grass silage as forage for stock.
- » **Produces Its Own Nitrogen:** The peas provide nitrogen for the crop during growth and free residual nitrogen for the following crop.
- » **Is A Soil Conditioner:** Significantly improves soil structure post-harvest.
- » **Reduced Disease Susceptibility:** Can be grown without insecticides to qualify for SFI CIPM4, worth £18.21 per acre.
- » **Qualifies for SFI CIPM3:** Worth £22.26 per acre.

Sowing rate: 75 kilos per acre.

Available in 600 kilo, 300 kilo, and 25 kilo bags, mixed and ready for despatch.

We recommend under-sowing VICTOR with PREMIUM to maximise the productivity and profitability of the field (see page 26).



Disclaimer: Before ordering seed for SFI schemes please see page 59.







# SOVEREIGN

## Combicrop®

SOVEREIGN Combicrop® is a unique blend of spring oats, spring barleys and combining peas that allows you to easily and profitably grow your own high-protein, high-starch feed.

SOVEREIGN is rapidly becoming the favoured choice amongst successful farmers across the country – with sales increasing year on year – because of its reduced disease susceptibility and enhanced crop yields.

### Why Choose SOVEREIGN Combicrop®?

- » **Healthy Crop:** This unique blend lowers the disease susceptibility of the crop, improving crop yields
- » **Versatile Harvest Options:**
  - » **Combine Dry:** Produces a high-starch feed concentrate meal with 13% to 18% protein, 50% to 60% more than straight oats or barley.
  - » **Wholecrop Fermented:** Harvest at 25% to 45% dry matter to use alone or with grass silage as forage for stock.
- » **Produces Its Own Nitrogen:** The peas provide nitrogen for the crop during growth and free residual nitrogen for the following crop.
- » **Is A Soil Conditioner:** Significantly improves soil structure post-harvest.
- » **Reduced Disease Susceptibility:** Can be grown without insecticides to qualify for SFI CIPM4, worth £18.21 per acre.
- » **Qualifies for SFI CIPM3:** Worth £22.26 per acre.

Sowing rate: 100 kilos per acre.

Available in 600 kilo, 300 kilo, and 25 kilo bags, mixed and ready for despatch.

We recommend under-sowing SOVEREIGN with PREMIUM to maximise the productivity and profitability of the field (see page 26).



Disclaimer: Before ordering seed for SFI schemes please see page 59.



# Cereal/Bean Combicrops<sup>®</sup>

The spring bean varieties used in our FORWARD and BOOSTER Combicrops<sup>®</sup> can significantly reduce the reliance on imported soya beans in feed rations by 30% to 50%.

These combinations have demonstrated a much lower risk of Chocolate Spot disease on the beans, ensuring healthier crops and better yields. FORWARD and BOOSTER can be grown without insecticides, so qualifying for SFI CIPM4 worth £18.21 per Acre.

## FORWARD Combicrop<sup>®</sup>

FORWARD is a precise blend of spring wheats and a spring bean formulated to work well together. It needs a good fertile soil to yield well and so works best when it is used as the first cereal in your farm rotation.

FORWARD will yield a high-quality, protein production ration when whole cropped or combined dry.

**Sowing rate:** 100 to 120 kilos per acre

**Delivered in 600 kilo & 300 kilo bags, mixed and ready for despatch.**

**Qualifies for GfE Options 7 & 8 (worth £91.05 & £141.23 per Acre)**

**Qualifies for SFI CIPM3 (worth £22.26 per Acre)**

## BOOSTER Combicrop<sup>®</sup>

BOOSTER is precise blend of spring oat varieties together with an early ripening bean. It will yield better in less fertile growing conditions than Combicrop<sup>®</sup> FORWARD, so can be used as the second cereal onwards in your farm rotations.

BOOSTER will yield a high-quality, protein production ration when both wholecropped or combined dry.

**Sowing rate:** 100 kilos per acre

**Delivered in 600 kilo & 300 kilo bags, mixed and ready for despatch.**

**Qualifies for GfE Options 7 & 8 (worth £91.05 & £141.23 per Acre)**

**Qualifies for SFI CIPM3 (worth £22.26 per Acre)**



**Disclaimer:** Before ordering seed for GfE/SFI schemes please see page 59.



# Winter Bird Food Mixtures

Our winter bird food mixtures are designed to produce a plentiful and reliable supply of small seeds to feed wild birds throughout the autumn and winter seasons.

**These mixtures qualify for: SFI AHL2 (worth £853.00 per Hectare) and GfE Option 16 or 17 (worth £919.00 or £1799.00 per Hectare).**

## Winter Bird Annual Mixture

This specially formulated annual seed blend offers a rich and steady supply of small seeds throughout the autumn and winter seasons.

Designed to be sown in sunny, fertile areas, it provides essential food resources for farmland birds.

### Winter Bird Annual Mixture Contains:

- 35% Spring Barley
- 35% Spring Oats
- 10% Spring Wheat
- 8% Mustard
- 6% Linseed
- 6% Fodder Radish

Available in 12.5 kilo (0.5 Hectare) bags

## Winter Bird 2-Year Mixture

This 2-year seed mixture contains a diverse selection of crop varieties, designed to minimise pest and disease risks while ensuring an abundant seed supply during the autumn and winter months.

Planted in sunny, fertile areas, it offers vital food resources for farmland birds over two seasons.

### Winter Bird 2-Year Mixture Contains:

- 35% Spring Barley
- 35% Spring Oats
- 10% Vetch
- 5% Mustard
- 4% Kale
- 4% Fodder Radish
- 4% Red Millet
- 2% ALSIKE Clover
- 1% Chicory

Available in 25 kilo (0.5 Hectare) bags



**Disclaimer:** Before ordering seed for SFI/GfE schemes please see page 59.



# GALLANT

## Decorative Winter Bird Mixture



GALLANT is a specially formulated cover crop mixture designed to provide essential seed and cover for birds, along with a crucial food resource for insects.

GALLANT flowers and sets seed over an extended period, offering nectar for insects and sustenance for birds from May through December/January.

### Why Choose GALLANT?

- » **Cereal-Free:** Unlike other winter bird food mixtures, GALLANT does not contain cereal.
- » **Biodiversity Support:** Supplies vital food resources for both birds and insects.
- » **Extended Flowering Period:** Ensures continuous nectar availability for pollinators.
- » **Extended Seeding Period:** Provides continuous feed for birds.
- » **Aesthetic Appeal:** When in full bloom, GALLANT is visually stunning, making it perfect for sowing in prominent farm areas to create a decorative and environmentally friendly feature.
- » **Qualifies for SFI AHL2:** Worth £853.00 per Hectare.
- » **Qualifies for GfE Option 16:** Worth £919.00 per Hectare.

### GALLANT Contains

- 30% Sunflower
- 25% Buckwheat
- 15% Mustard
- 15% Phacelia
- 5% White Millet
- 5% Red Millet
- 5% Forage Rape

Available in 12.5 kilo (0.5 Hectare) bags



**Disclaimer:** Before ordering seed for SFI/GfE schemes please see page 59.

# Amenity Grass Seed Specialist Mixtures for the Perfect Lawn

Grass is not just grass! The way your amenity grass area is used will determine the best mixture to achieve optimal results. For instance, a mixture suitable for a bowling green would be entirely unsuitable for a shaded lawn.



## Ornamental Lawn Mixture

If you desire a fine lawn with a “bowling green” finish that will showcase your home beautifully, our Ornamental Lawn Mixture is the ideal choice. This mixture uses the highest quality fine grasses to produce a superb classic “striped” lawn.

**Sowing Rate: 50g per m<sup>2</sup>**

## Meadow Mixture

With growing interest in creating environmentally friendly gardens that attract wildlife, our Meadow Mixture is perfect. It contains the best STRI-recommended smooth-stalked meadow grasses mixed with 20% UK-native wildflowers, creating a natural meadow that looks stunning and provides a haven for wild birds, butterflies, and bees.

**Available in 1 kilo packs, which will sow up to 100m<sup>2</sup>**

## Shaded Lawn Mixture

Growing a good lawn in shady or low-light conditions can be challenging. Our Shaded Lawn Mixture is designed specifically for these situations, helping you establish a lush lawn under trees, near walls, or around house walls.

**Sowing Rate: 50g per m<sup>2</sup>**

## General Purpose Lawn Mixture

Our most popular lawn mixture, the General Purpose Lawn Mixture, provides a superb, first-class lawn that is also hard-wearing, making it perfect for children to play on.

**Sowing Rate: 50g per m<sup>2</sup>**

## We Can Produce Mixtures to Meet Your Needs

Call us for grass seed for other amenity areas, such as football pitches, caravan sites, county council requirements etc.

With over 40 years of experience, our seed professionals can help you select the perfect grass varieties for your specific needs, ensuring the best and most cost-effective solution.



# Ordering & Payment Information

To order, or for expert advice from one of our seed professionals, please contact our customer support team:



[info@westernseeds.com](mailto:info@westernseeds.com)



+44 (0)1834 861 904

Next day delivery is available

Please ensure your order is placed before 12 noon. We do not currently offer weekend delivery.

## Methods of Payment

### Bank transfer, debit or credit card

Our bank details are:

Account No. 70836923

Sort Code: 20-37-82

IBAN: GB11 BARC 2037 8270 836923

SWIFT Bic: BARC GB22



(We require all international transfers to us to be made with the OUR instruction.)

### Cheque

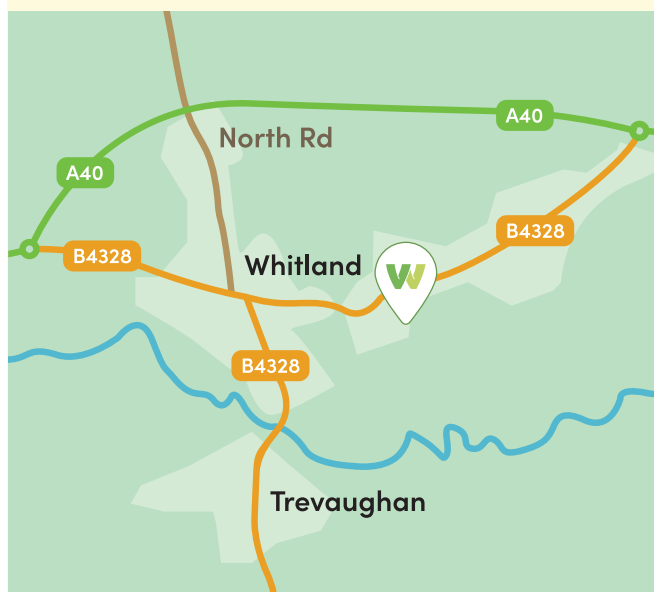
Cheques should be made payable to Western Seeds Ltd and posted to our head office:

Clover Park Farm, Narberth, Pembrokeshire, SA67 8EY

## Seed Collection

### Please visit us at

Western Seeds Distribution Centre,  
Spring Gardens, Whitland SA34 0HN



We recommend you confirm variety composition at time of ordering.



## Important Notes

- All seed mixtures correct at time of going to press, errors and omissions excepted
- As the season progresses some varieties occasionally become unavailable. If this happens a similar variety will be used in its place.



- **Disclaimer:** SFI/GfE grant information correct at time of publishing. We cannot accept any liability for the information provided and recommend you check with your governing body for any changes to scheme requirements before purchasing seed.



[www.westernseeds.com](http://www.westernseeds.com)



Western Seeds, Clover Park  
Farm, Narberth, SA67 8EY



[info@westernseeds.com](mailto:info@westernseeds.com)



+44 (0)1834 861 904

Registered Office: Clover Park Farm, Narberth, Pembrokeshire, SA67 8EY  
Registered in England and Wales Number: 3952911 VAT No: 647 8662 87